

SCENIC ROUTES ALONG RIVERS AND STREAMS



[illegible][illegible][illegible][illegible][illegible][illegible]

A Complete Tour Overview

Routes in Heidelberg:

- A Grand Tour of the Old Town – Historic city, castle & riverbanks
- An Heiligenberg Tour – Panoramic views over the Neckar
- A Little Tour of the Old Town – Old Bridge & Philosopher's Walk
- A Wieblinger Tour – Local charm along the Old Neckar
- A Stroll Along the Neckar – Neuenheim riverbank family walk
- A Ride with the Liselotte – Neckar boat cruise from Alte Brücke

Nearby Water Trails & Nature Walks:

- Neckargemünd Flood Path – History & high-water marks along the Neckar
- Mudau Spring Trail – Springs, hills & reservoirs around Mudau
- Eberbach: Trail of River History – Neckar & town life across ages
- Elsenzaue Nature Trail (Mauer) – Wetlands, ecology & floodplain paths
- Lobbach Stream Nature Trail – Ecosystem learning along a stream
- Wetlands at Ilvesbach (Bammental) – Short loop through a rich habitat
- Seckach-Zimmern Nature Trail – Stream cycle education trail
- Walk in Speyer – UNESCO Cathedral & riverside promenade
- Berghäuser & Altlussheimer Altrhein – Old Rhine loops & forests
- Lifeline of the Upper Rhine (Brühl) – Meadows, birds & biodiversity
- Dilsberg Castle Tunnel – Hidden water supply & historic tunnel
- Margareten Gorge Trail – Waterfalls, gorges & wild cliffs

A Complete Tour Overview

Further Regional Trails:

- Beautiful River Hike in Edingen-Neckarhausen – Scenic Neckar walk
- Fish Nursery (Fischkinderstube) – Biodiversity & conservation zone
- Six-Mill Valley (Weinheim) – Watermills & forest walks
- St. Leoner See Loop via Francis-Turbine – Lake, turbine & energy trail
- Oftersheim Dunes Hike – Inland dunes near the Rhine
- Ilvesheim – Maulbeerinsel – Power station & tranquil island walk
- Old Rhine Adventure Trail (Eich) – Wetlands & Roman history
- Lorsch Water Trail – Teschenauer Berg Loop – Springs & scenic hills
- Guntersblum Eco-Trail – Vineyards, geology & nature education
- Lifeline of the Upper Rhine (2nd route – Schwetzinger Wiesen) – Rich floodplain biodiversity
- Mannheim-Rheinau: Riedwiesen Trail – Urban wetlands & bird habitat
- Energy and Future Storage Tower (Heidelberg Pfaffengrund) – Thermal water energy & sustainability feature

A Grand Tour of the Old Town

A hike through Heidelberg's old town. Although the route is walkable and not difficult, being in good physical condition is recommended.

Overview



Length ca: 6 km



Altitude: 100 m



Duration ca: 2:5 hours



Fried.-Ebt.-Platz

Tour

Family Friendly

Accessible by Bus and Tram

Cultural & Historical

Refreshment Possibilities

Shopping

Description of the Walking Tour

With the Neckar firmly in view, the route goes up to the castle, down through the old town and then makes a detour to the Neuenheimer Riverbank.

Friedrich-Ebert-Platz

Uni-Bibliothek

Klingenteich

Jüdischer Friedhof

Heidelberger Schloss

Stauwehr



Start:

Friedrich-Ebert-Platz
69117 Heidelberg



ÖPNV:

Line 33
Bus: Friedrich-Ebert-Platz

SCAN
ME!



Other Points of Interest

Heidelberg Candy Store
Castle Gardens



An Heiligenberg tour

A demanding hike over the Zollstock to the Heiligenberg.

Overview



Length ca: 12 km



Altitude: 500 m



Duration ca: 4 hours



Philosophenweg

Day Trip

Historical

Accessible by Bus and Tram

Beautiful View

Hiking

Description of the Walking Tour

With a spectacular view of the Neckar, the route starts on the Philosopher's Walk goes over Mausbach to Heiligenberg and via Mühlbach and Fuchsrondell back to the starting point.

Philosophenweg

Mausbachwiese

Michaelskloster

Heiligenberg

Mühlthal

Fuchsrondell



Start:

Brückenstraße 69120
Heidelberg



ÖPNV:

Line 5/23/31
Tram stop Brückenstraße

SCAN
ME!



Other Points of Interest

Mausbach Meadow Hut „Schöne
Aussicht“



A Little Tour of the Old Town

A moderate hike through the old town with a steep ascent to the Philosopher's Walk.

Overview



Length ca: 5 km



Altitude: 120 m



Duration ca: 2 hours



Bismarkplatz

Refreshment Possibilities

Accessible by Bus and Tram

Family Friendly

Cultural/Historical

Tour

Description of the Walking Tour

Along the main street at the Holy Ghost Church, the path leads over the Old Bridge to the Schlangenweg and Philosopher's Walk, down Hirschgasse via the Neckarschleuse (water locks).

Hauptstraße

Neckarufer

Alte Brücke

Schlangenweg

Philosophenweg

Stauwehr



Start:

Bismarkplatz 1
69117 Heidelberg



ÖPNV:

Line 5/21/22/23/26/31/32/34/...
Tram stop Bismarkplatz

Other Points of Interest

Philosopher's Garden Kurpfälzisches
Museum

SCAN
ME!



A Wieblinger Tour

A leisurely stroll through historic Wieblingen with the possibility of a picnic on the banks of the Old-Neckar.

Overview



Length ca: 5 km



Altitude: 10 m



Duration ca: 1:5 hours



Mannheimer Str.

Refreshment Possibilities

Accessible by Bus and Tram

Family Friendly

Cultural/Historical

Tour

Description of the Walking Tour

This tour explores the town of Wieblingen which is located downstream of the Neckar. In the delicatessens in the town's center, you can buy items for a picnic on the picturesque shore.

Historischer Ortskern

Ufer Alt-Neckar



Start:

Mannheimer Str. 250
69117 Heidelberg



ÖPNV:

Line 35 Bus:
Evangelische Kirche

Other Points of Interest

Wieblinger Neckar Meadow
Ice Cream Shop "OK Kool"

SCAN
ME!



A Wieblinger Tour



A Stroll Along the Neckar

A leisurely stroll through the streets of the old town and along the banks of the Neckar.

Overview



Length ca: 5 km



Altitude: 20 m



Duration ca: 1:5 hours



Bismarkplatz

Refreshment Possibilities

Accessible by Bus and Tram

Family Friendly

Cultural/Historical

Tour

Description of the Walking Tour

The Neuenheimer riverbank shows its natural side and will delight the whole family as you explore the riverbank alongside the old town's historical buildings.

Theodor-Heuss-Brücke

Stadthalle

Marstall & Heuscheuer

Alte Brücke

Neckarwiese

Wasserspielplatz

Skatepark



Start:

Bismarkplatz 1
69117 Heidelberg



ÖPNV:

Line 5/21/22/23/26/31/32/34/...
Tram stop Bismarkplatz

Other Points of Interest

Marstallhof
Nepomuk Terrace
Water Playground

SCAN
ME!



A Stroll Along the Neckar



A Ride with the Liselotte

A relaxed voyage on the Neckar river with the historic motorboat MS Liselotte from the Pfalz.

Overview



Length ca: 4 km



Altitude: 00 m



Duration ca: 1 hours



Alte Brücke

Stage Tour

Boat Ride

Accessible by Bus and Tram

Family Friendly

Cultural/Historical

Description of the Walking Tour

The MS Liselotte from the Pfalz is Heidelberg's most popular boat. During the trip, the boat passes alongside both banks of the charming Neckar and it stops to allow you to enjoy the scenery.

Alte Brücke

Stadthalle

Neuenheim

Campus

Marriott Hotel



Start:

Alte Brücke
69117 Heidelberg



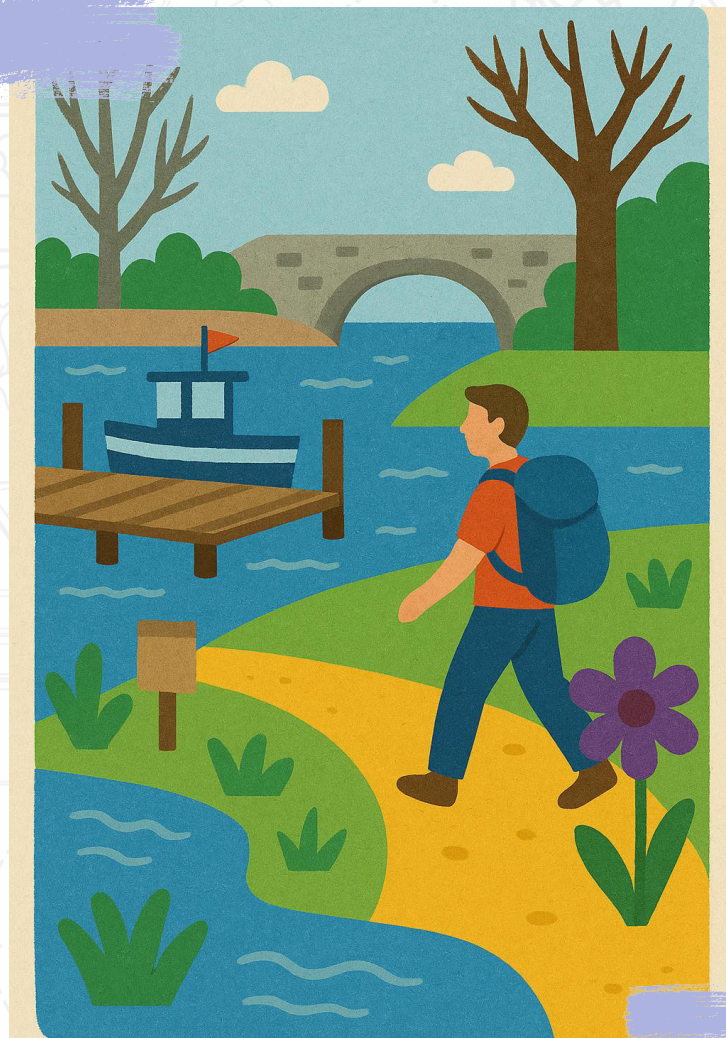
ÖPNV:

Line 35
Bus stop Alte Brücke

Other Points of Interest

Riverbank Panorama
Neckar Meadow

SCAN
ME!




Mudau: Mudau Spring Trail

The Mudauer Quellenweg takes you on a circular tour following the traces of Mudauer's water supply.

Overview

 Length ca: 4,9 km

 Altitude: 00 m

 Duration ca: 1:15 hours

 Mudau Town Hall

Stage Tour

Boat Ride

Accessible by Bus and Tram

Family Friendly

Cultural/Historical

Description of the Walking Trail

Experience a 4.9 km circular walk from Mudau Town Hall, exploring historic reservoirs, scenic hills, and tranquil springs. Enjoy panoramic views, forest paths, and relaxing stops at the leisure center.

Madau Town Hall

Mountain Hut

Madau Leisure Facility

Madau Cemetery

 Start:

Madau Town Hall
69117 Heidelberg



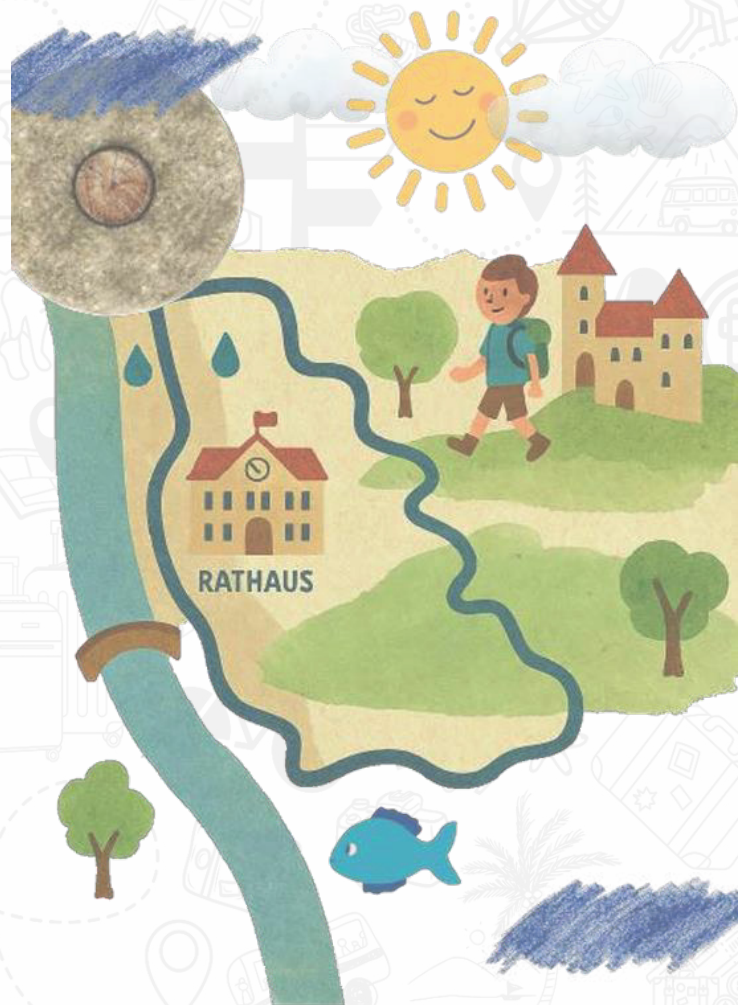
ÖPNV:

Line 821/832/8935/8943/96/840/844
Bus stop: Mudau

Other Points of Interest

Stallenbirken Hill
Mudau Leisure Centre
Alte Lok in Mudau

SCAN
ME!



Neckargemund Flood Path

Tour takes you on an informative loop trail along the Neckar River, highlighting the history and impact of flooding in the region.

Overview



Length ca: 2,8 km



Altitude: 122 m



Duration ca: 0:43 hours



Menzer Park Neckargemund

Tour

Themed Trail

Accessible by Bus and Tram

Family Friendly

Cultural/Historical

Description of the Walking Tour

This approximately 2.8 km long educational trail leads through scenic parts of Neckargemund, tracing the high-water marks & documenting the town's relationship with the Neckar River.

Villa Menzer in Neckargemund

Canoe Rental in Neckargemund

Christian Restaurant in Neckargemund

Outdoor Swimming Pool



Start:

Menzer Park Neckargemund
69151 Neckargemund



ÖPNV:

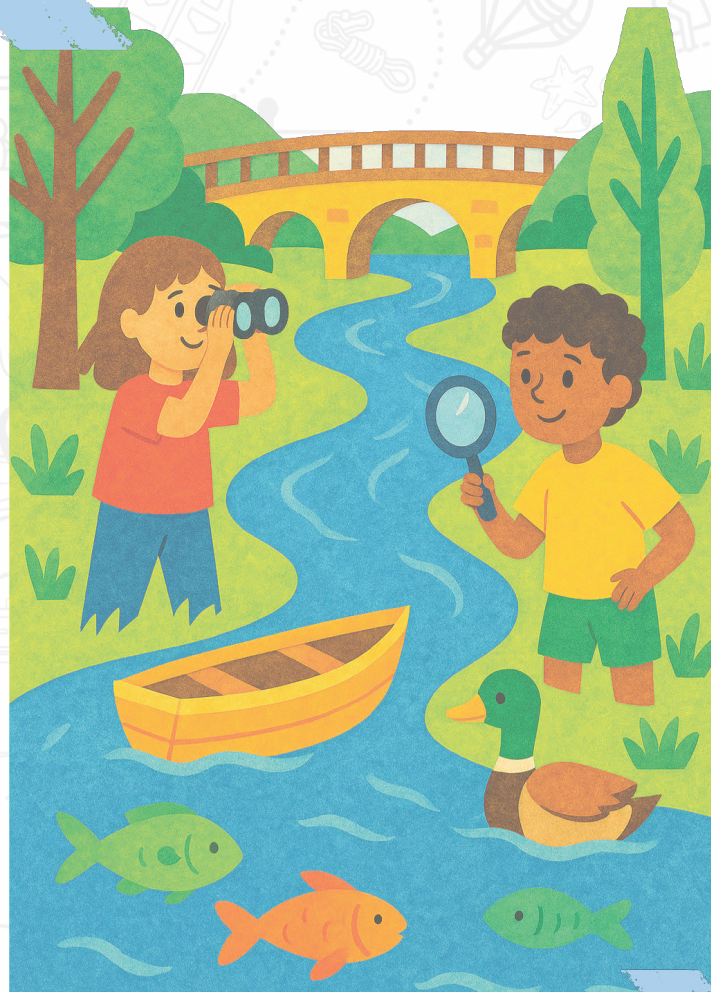
S-Bahn Line S5/ S51
Stop: Neckargemund – Altstadt

SCAN
ME!



Other Points of Interest

Historic Old Town
Neckar Riverwalk
Elsenz River Confluence



Eberbach: Trail of River History

Tour takes you along the Neckar River in Eberbach, exploring the dynamic relationship between the town and the river through the ages.

Overview



Length ca: 11,4 km



Altitude: 373 m



Duration ca: 3:26 hours



Neckartal-Odenwald
Nature Park Center

Themed Trail

Accessible by Bus and Tram

Family Friendly

Cultural/Historical

Description of the Walking Tour

Discover the history of Eberbach's riverside life. The trail features a series of information panels detailing the influence of the Neckar on the town's trade, flood protection, daily life, & ecological development.

City Hall

Powder Tower

Medieval City Wall of Eberbach

Sport Boat Mooring Eberbach

Eberbach City Museum



Start:

Neckartal-Odenwald Nature
Park Center, 69412 Eberbach



ÖPNV:

S-Bahn Line 821 (NeOBus)
Bus: Eberbach Bahnhof

SCAN
ME!



Other Points of Interest

Thalheimsches Haus
Ludwig Neuer Hut
Ernst Hohn Pavilion



Elsenzaue Nature Trail, Mauer

The Elsenzaue Nature Trail invites you on a nature discovery tour through the scenic floodplain landscape of the Elsenz River near Mauer.

Overview



Length ca: 1,5 km



Altitude: 134 m



Duration ca: 0:30 hours



Bahnhofstrasse

Accessible by Bus and Tram

Nature Discovery Trail

Family Friendly

Cultural/Historical

Description of the Walking Tour

This 1.5 km circular trail offers an engaging experience through the nature reserve, biodiversity, river ecology, & floodplain conservation. Along the path, you'll find info boards, wetlands, & a viewing platform.

Wetlands and Meadows of the Elsenzaue

Viewing Platform

Educational Stations about Local Flora

Dino Playground Wall



Start:

Bahnhofstrasse
69256 Mauer



ÖPNV:

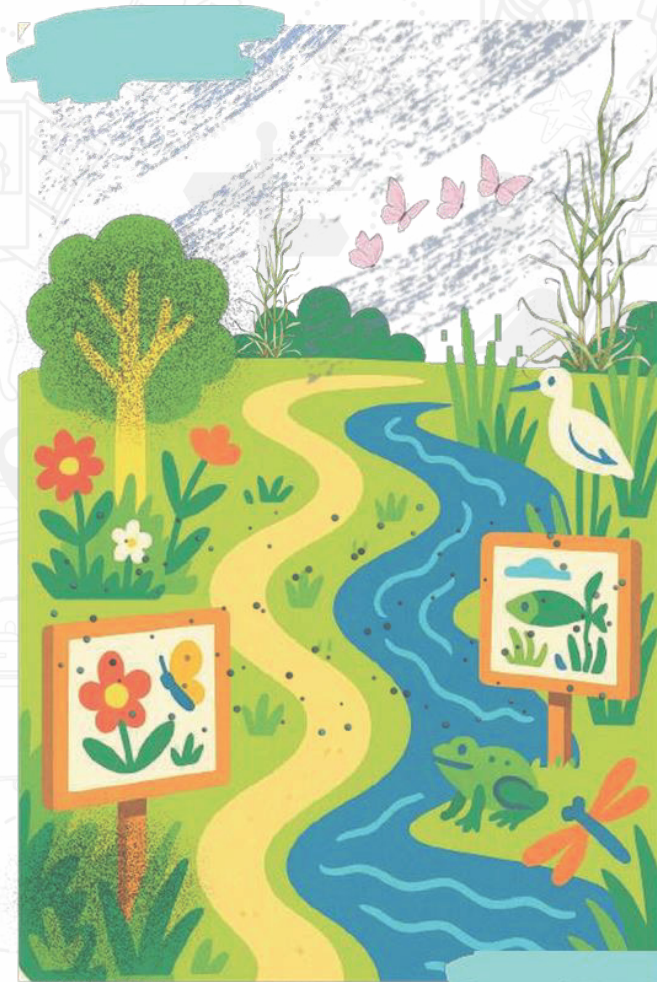
S-Bahn: Line S5 Bus:
Connections Available

SCAN
ME!



Other Points of Interest

Fossil Discovery site (Homo
heidelbergensis)
Elsenz River Picnic Spots



Lobbach Stream Nature Trail

The Trail leads you along the Lobbach stream, offering insights into stream ecosystems & the importance of water in our natural environment.

Overview



Length ca: 1,6 km



Altitude: 209 m



Duration ca: 0:45 hours



From exit of Lobenfeld

Accessible by Bus and Tram

Nature & stream Educational Trail

Family Friendly

Educational / Informative

Description of the Walking Tour

This 1.6 km educational trail follows the Lobbach stream through a varied landscape. On the way, thematic stations explain the dynamics of flowing water, the importance of riparian vegetation, & local wildlife.

Lobbach Stream Course

Educational Panels about Stream Life

Shaded Forest Pathways

Small Wooden Bridges



Start:

Exit of Lobenfeld
74931 Lobbach



ÖPNV:

Bus: Connections Available
Via Neckargemund / Meckesheim

Other Points of Interest

Community of Lobbach Cafes
Streamside Picnic Areas
Nearby Biking Trails

SCAN
ME!




Wetlands at Ilvesbach

The wetlands at Ilvesbach offer a serene insight into one of the region's valuable wetland, rich in biodiversity & essential for water conservation.

Overview

 Length ca: 0.4 km²

 Altitude: 0 m

 Duration ca: -hours

 Ilvesbach Valley Path

Accessible by Bus and Tram

Nature, stream Educational Trail

Family Friendly

Educational / Informative

Description of the Walking Tour

This ecologically significant area is home to amphibians, birds, and rare wetland plants. A short walk along the adjacent paths provides an opportunity to observe and learn about this precious habitat up close.

Lobbach Stream Course

Educational Panels about Stream Life

Shaded Forest Pathways

Small Wooden Bridges



Start:

Ilvesbach Valley Path,
69245 Bammental



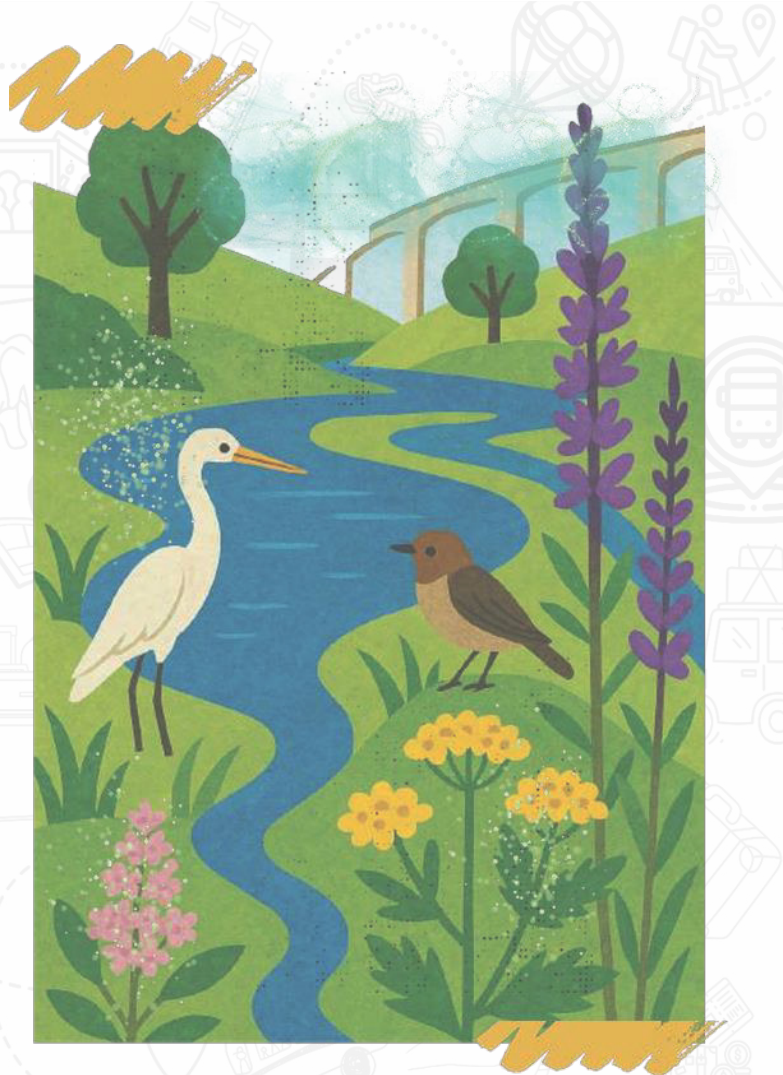
ÖPNV:

S-Bahn: Line S5
Walking Distance.

Other Points of Interest

Community of Lobbach -Cafes
Streamside Picnic Areas
Nearby Biking Trails

SCAN
ME!



Seckach-Zimmern Nature Trail

The Nature Trail guides you along the picturesque Seckach stream, combining nature exploration with educational insights about water ecosystems.

Overview



Length ca: 0,9 km



Altitude: 250 m



Duration ca: 0:15 hours



Seckach-Zimmern

Accessible by Bus and Tram

Stream-Themed Educational Trail

Family Friendly

Nature + Environmental Awareness

Description of the Walking Tour

This 0,9 km trail runs along the Seckach stream. It features 10 educational stations that explain the dynamics of a stream's life cycle, water quality, flora & fauna, the importance of water for biodiversity.

10 Educatable Signposts

Wooden Footbridges & Viewing Spots

Nature Play Stations for Kids

Shaded Trail with Rest Points



Start:

Seckach-Zimmern
74722 Zimmern

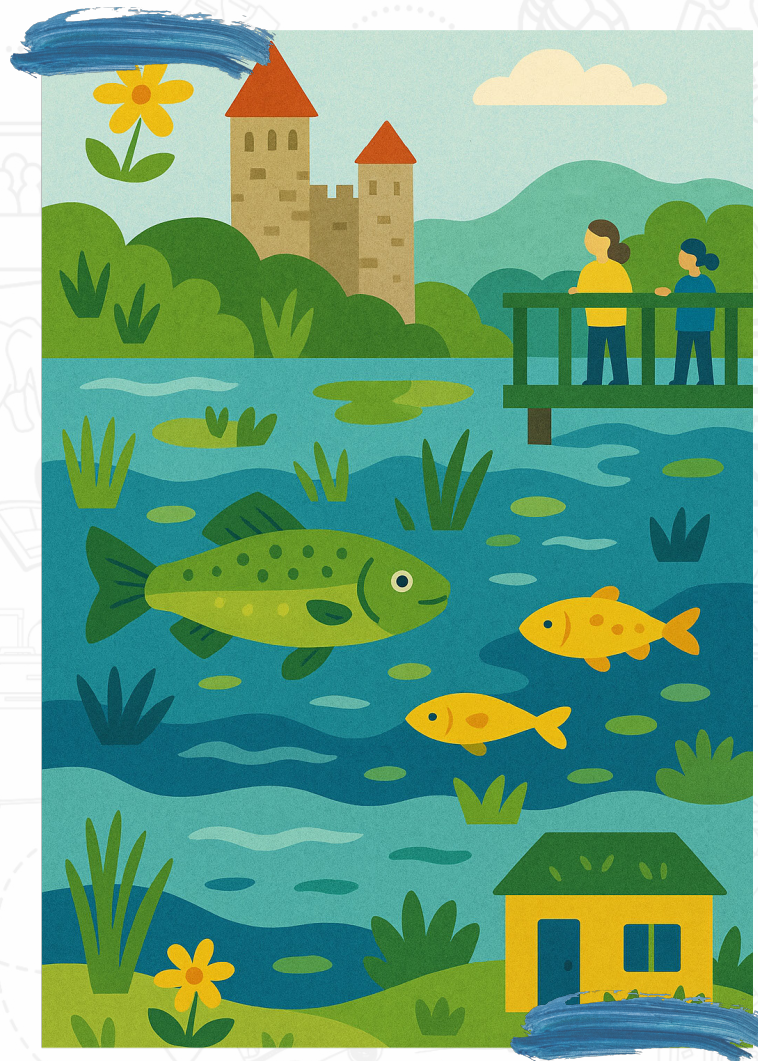


ÖPNV:

Bus: Seckach
Station: Seckach Bahnhof

Other Points of Interest

Seckach Outdoor Playground
Picnic Benches along the Trail
Educational Signage for Group



SCAN
ME!



Walk in Speyer

The Nature Trail guides you along the picturesque Speyer, combining nature exploration with educational insights about water ecosystems.

Overview



Length ca: 5,1 km



Altitude: 104 m



Duration ca: 1:15 hours



Speyer Cathedral

Accessible by Bus and Tram

Stroller -Friendly

Round Trip

Cultural / Historical

Description of the Walking Tour

This tour takes you through the Speyer's old town, beginning at the UNESCO World Heritage-listed Speyer Cathedral. Route continues past museums, baroque architecture, & green promenades along the Rhine.

Speyer Cathedral (Dom)

Historical Museum of the Palatinate

Trinity Church

Old Gate (Altpörtel)



Start:

Domplatz
67346 Speyer



ÖPNV:

Bus: Ava. to City Center
Train: Speyer HBF

Other Points of Interest

Technik Museum Speyer
Jewish Courtyard & Mikveh
Baroque City Architecture

SCAN
ME!



OLD TOWN TOUR



Berghäuser Altrhein & Altlussheimer Altrhein

The Nature Trail guides you along the picturesque Seckach stream, combining nature exploration with educational insights about water

Overview



Length ca: 8,9 km



Altitude: 99 m



Duration ca: 2:09 hours



Rheinhausen ferry terminal

Accessible by Bus and Tram

Photography & Birdwatching

Flat and Easy Terrain

Floodplain forests & Old Rhine Loops

Description of the Walking Tour

The route leads you through riparian forests, meadows, & marshland, ideal for birdwatching, quiet reflection, and discovering riverine ecology. The walk offers both tranquility and ecological richness.

Horn Island

Goldmine Wildlife Habitats

Trinity Church

Observation Tower



Start:

Rheinhausen ferry terminal 79365
Rheinhausen



ÖPNV:

Bus/Ferry: Rheinhausen
Train: Speyer or
Hockenheim

Other Points of Interest

Scenic Ferry Ride across the Rhine
Natural Floodplain Forests

SCAN
ME!



Lifeline of the Upper Rhine

This scenic circular trail through the Schwetzingen Wiesen and Riedwiesen invites you to explore the vital lifelines of the Upper Rhine-lush meadows, wetlands, and a wealth of biodiversity shaped by water.

Overview



Length ca: 9,3 km



Altitude: 98 m



Duration ca: 2:15 hours



Im Rheinfeld

Accessible by Bus and Tram

Refreshment Stop

Round Trip

Family-Friendly

Fauna

Description of the Walking Tour

The route leads you through riparian forests, meadows, & marshland, ideal for birdwatching, quiet reflection, and discovering riverine ecology. The walk offers both tranquility and ecological richness.

Schwetzingen Wiesen Nature Reserve

Ketscher Rhine Island

Koller Ferry in Brühl

Restaurant Kollerinsel



Start:

Near flood barrier
68782 Brühl-Rohrhof



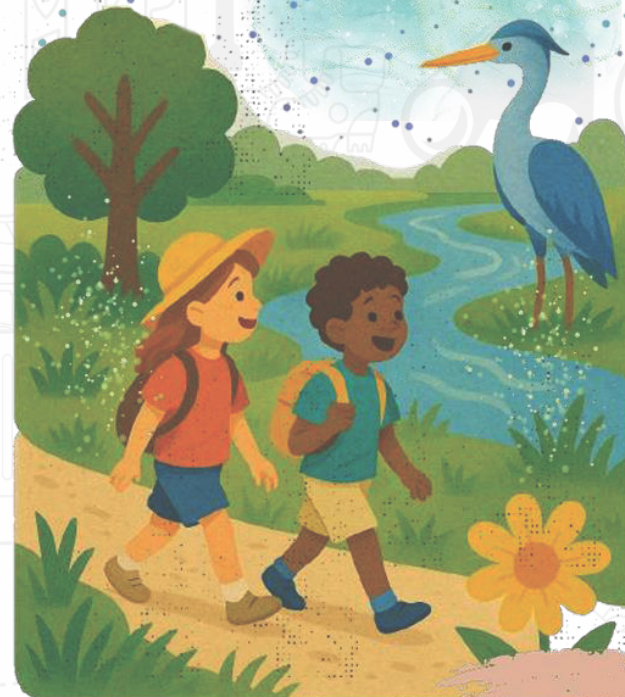
ÖPNV:

Train: S-Bahn Line S9/S3
Bus: 710/717

Other Points of Interest

Seasonal Wildflower blooms Ideal
for Birdwatching, Families &
Nature Walkers

SCAN
ME!



Dilsberg Castle Fortress

Beneath the mighty Burgfeste Dilsberg, a mysterious rock tunnel winds deep into the mountain an echo of ancient secrets and legends. Discover this hidden treasure, once forgotten, now brought to light for curious adventurers.

Overview



Length ca: 80 m



Depth: Approx 30
meters
Burgfeste Dilsberg



Duration ca: 0:30 hours

Underground Adventure for All Ages

Historic Rock Tunnel

Man-Made Engineering Wonder

Description of the Walking Tour

Originally dug in the 17th century as a secret water tunnel, the Verborgener Schatz (Hidden Treasure) of Dilsberg Castle lay forgotten for decades.

Stone Tunnel Carved Into The Rock

Original Well Shaft

Info Boards About Tunnel's Origin



Start:

Burghof 5, 69151
Neckargemünd-Dilsberg



ÖPNV:

Train: S-Bahn
Bus: 754 / 755

SCAN
ME!



Tips for Tour

Not Suitable for Wheelchairs
Bring the light Jacket
Kids love the Adventure



Margareten Gorge Trail

Step into a world of rugged cliffs, roaring waterfalls, and wild beauty as you hike through the spectacular Margareten Gorge – one of the most dramatic natural sights along the Neckar Valley.

Overview



Length ca: 3,5 km



Altitude: 110 m



Duration ca: 2:00 hours



Schluchtenparkplatz

Lush Forest & Cascading Waterfalls

Wild George Adventure

Steep. Natural Steps & Bridges

Challenging, Rewarding Hike

Description of the Walking Tour

a short but intense circular hiking trail that winds through the dramatic Margareten Gorge, carved over thousands of years by the little Flursbach stream.

Nature Reserve "Margaretenschlucht"

Steep George Walls

Ancient Sandstone Formation



Start:

Schluchtenparkplatz
(B37/Neckargerach
from Mosbach)

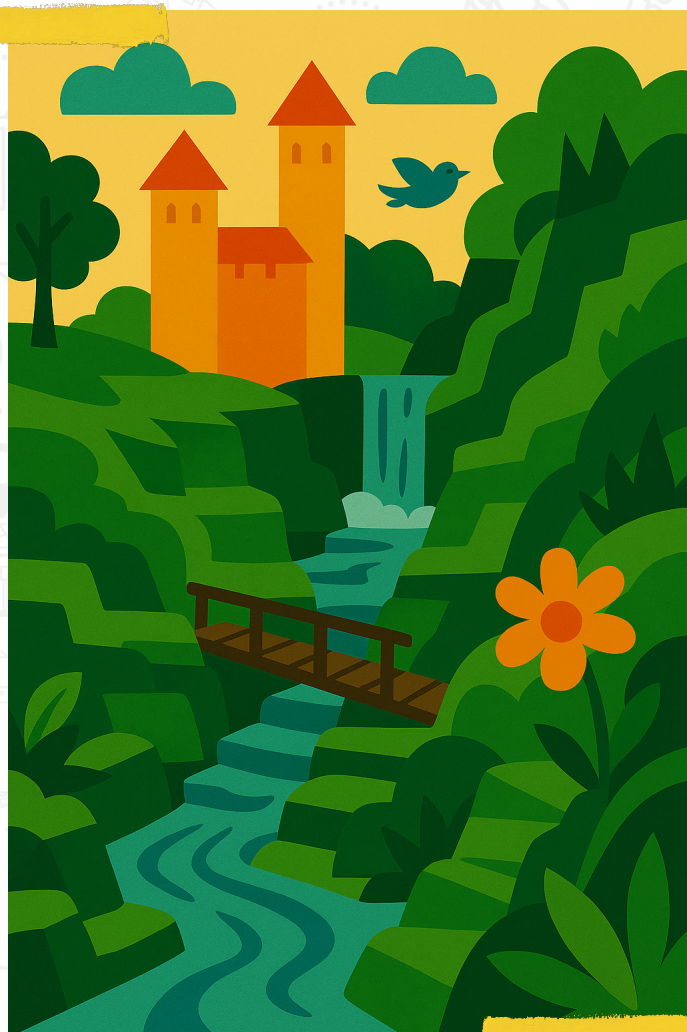


ÖPNV:

Train: S-Bahn line S1/S2
Bus: between
Neckargerach

Other Points of Interest

Neckarsteig Hiking Trail
Zwingenberg Castle & George
Neckargenrach Camping Platz



SCAN
ME!



Energy and future storage Heidelberg

A symbol of the energy transition Heidelberg's Energy Storage Tower

Overview

- Type: Thermal Energy Storage
- Height: 55 m
- Storage: 12,8 million lit
- Pfaffengrund, Heidelberg

Flagship Energy Transition Project

Iconic Light Art Installation

Part of Climate-Neutral City

Renewable Energy Optimization

Description of Facility

Built by Stadtwerke Heidelberg, this 55-meter-high thermal energy storage tank plays a crucial role in district heating. It stores hot water produced from renewable & efficient energy sources like biomass, solar thermal, & combined heat and power plants.

Integration with Smart Grid Systems

Reduce Fossil Energy Dep.

Boost Efficiency of Heidelberg's Heating Network



Start:

Pfaffengrund Energy
Park 69124 Heidelberg



ÖPNV:

Tram: Line 22
Bus: Line 33

SCAN
ME!



More than Energy

Events and public engagement
opportunities
LED façade powered by live data



Lorsch: Water Trail – Teschenauer Berg Loop

Explore the water landscapes around Lorsch on this educational trail.

Overview



Length ca: 7,5 km



Type: Hiking Trail



Duration ca: 2:00 hours



Geo-Naturpark

Accessible by Train & Bus

Educational Nature Trail

Family-Friendly

Suitable for All Ages

Description of the Hiking Trail

This 7.5 km circular trail, operated by the Geo-Naturpark Bergstraße-Odenwald, guides hikers through diverse landscapes, highlighting the region's water bodies and their ecological significance

Scenic Views of Teschenauer Berg

Educational Stations

Accessible Paths Suitable for Families



Start:

Train begins in Lorsch
64653 Lorsch



ÖPNV:

Train: (RB/RE)
Bus: 637/646

SCAN
ME!



Other Points of Interest

UNESCO World Heritage Site
Geo-Naturpark Bergstraße
Odenwald



Six-mill Valley

Discover the timeless charm of the Six Mills Valley in Weinheim, where centuries-old watermills, forest landscapes, & the gentle sound of flowing streams come together to tell a story of harmony between history, nature, & tradition.

Overview



Length ca: Approx 6,4

km



Duration ca: 1:50 hours



Type: Linear Hiking Trail



Fuchs'sche Mühle,
Weinheim

Accessible by Train & Bus

Flat and Easy Terrain

Cultural/Historical

Natural Beauty

Description of the Trail

The Sechs-Mühlen-Tal trail offers a gentle hike suitable for all ages. While parts of the path run adjacent to roads, the overall experience is enriched by the historical context and natural surroundings.

Six Mills

Viewpoints to Windeck Castle & Wachenburg

Odenwald Nature Experience



Start:

Fuchs'sche Mühle, Mühlenweg
69469 Weinheim



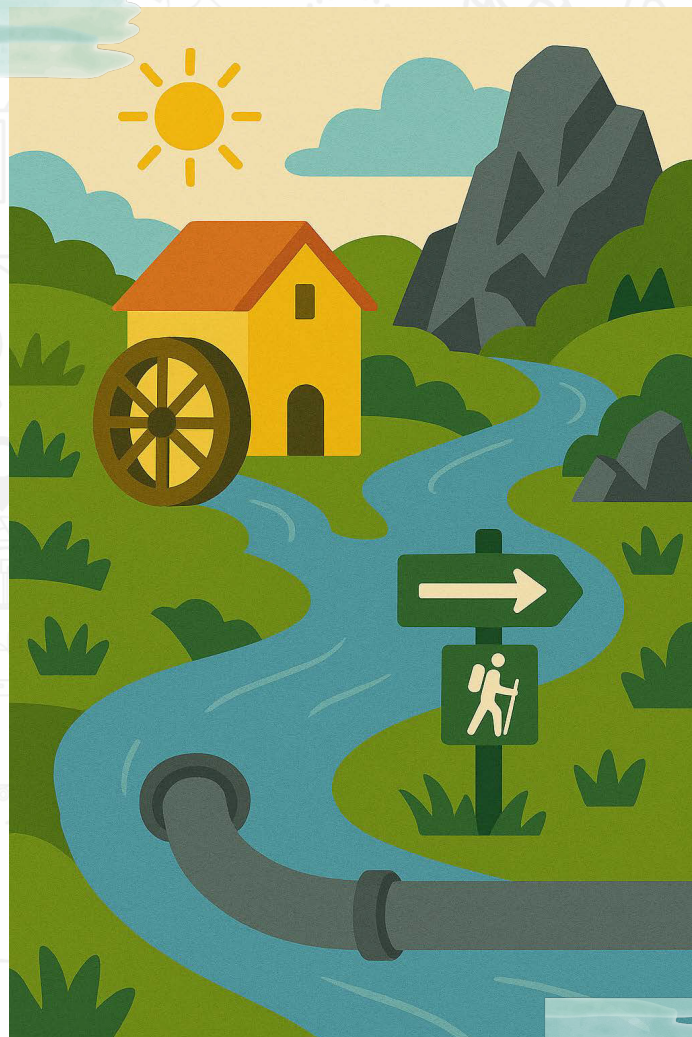
ÖPNV:

Bus: from turm Straße
Train: RB/RE -Weinheim

Other Points of Interest

Windeck Castle
Wachenburg

SCAN
ME!



Beautiful river hike in Edingen-Neckarhausen

Experience a picturesque riverside hike along the Neckar River.

Overview



Length ca: 7,9 km



Altitude: 105 m



Duration ca: 2:00 hours



Edingen-Neckarhausen

Accessible by Train & Bus

Round Trip

Promising

Family Friendly

Refreshment Stop

Description of the Trail

Enjoy a peaceful walk starting at the swimming pool in Neckarhausen, following the banks of the Neckar River. The flat path is ideal for a relaxed stroll with scenic views, ferry crossings, & multiple rest spots.

Neckar River Path

Ferry Crossing in Neckarhausen

Fährhaus am Krottenneckar

Fish Nursery



Start:

Mühlenstraße, 68535
Edingen-Neckarhausen



ÖPNV:

Train: To Edingen station
Bus: Neckarhausen

Other Points of Interest

Historic Ferry to Ladenburg Riverside
meadow paths & benches



SCAN
ME!



Lifeline of the Upper Rhine

This scenic loop walk invites you to explore the rich biodiversity of the Schwetzingen Wiesen and Riedwiesen – part of the vital floodplain ecosystem along the Upper Rhine.

Overview



Length ca: 9,3 km



Altitude: 98 m



Duration ca: 2:15 hours



Hofstraße/Im Rheinfeld

Fauna

Family Friendly

Accessible by Bus and Tram

Refreshment Stop

Description of the Walking Tour

Trail through one of the Upper Rhine's most ecologically valuable regions. The Schwetzingen Meadows & Reed Meadows are home to rare flora & fauna, shaped by seasonal floods.

Riedwiesen floodplain habitats

Wildlife observation points

Interpretive signs explaining flora, fauna,



Start:

End of Hofstraße / Im
Rheinfeld, 68782 Brühl-Rohrhof



ÖPNV:

Line: Brühl/Schwetzingen
Bus: Line 710 → Brühl Mitte

SCAN
ME!



Other Points of Interest

Lebensader Oberrhein
Old Rhine riverbeds
Schwetzingen Palace Garden



Mannheim-Rheinau: Riedwiesen Nature Trail

Experience the unique wetland habitat of the Riedwiesen in Mannheim-Rheinau a serene escape into nature within the city.

Overview



Length ca: 5,6 km



Altitude: 161 m



Duration ca: 2:29 hours



Rheinau, Dortmunder Straße

Accessible by Bus and Tram

Fauna

Refreshment Stop

Family Friendly

Description of the Walking Tour

The Riedwiesen in Mannheim-Rheinau are among the last intact wet meadow landscapes in the region. A quiet natural area filled with rare flora & fauna, shaped by the Rhine's historic floodplains.

Natural wet meadow ecosystem

Interpretive stations

Habitat for rare birds, amphibians, and insects



Start:

Rheinau, Dortmunder Straße
Pincode / ZIP: 68219



ÖPNV:

Bus: Stop: Rheinau,
Dortmunder Straße

SCAN
ME!



Other Points of Interest

Vogelpark Rheinau-small bird sanctuary
Waldpark Mannheim



Fish Nursery

The Fischkinderstube in Edingen-Neckarhausen is a pioneering ecological initiative along the Neckar River, seamlessly blending habitat conservation, environmental education, and leisure.

Overview



Area ca. 13,000 m²



Construction : Nov16-May 18



Duration ca: App. 3:00 hours



Total Cost: €3.6 million

Accessible by Bus and Tram

Free Access

Refreshment Stop

Family Friendly

Description of the Tour

As one of the largest side waters along the Neckar, the Fischkinderstube serves as a vital spawning and refuge area for numerous fish species. Its design includes shallow zones, reed beds, & deadwood structures, providing shelter and nourishment

Observation Platforms

Green Classroom



Start:

Between the districts of Edingen and Neckarhausen



ÖPNV:

Bus: local bus services to Edingen-Neckarhausen

SCAN ME!



Other Points of Interest

Spring and summer months, when the flora and fauna are most active



Hike through the Oftersheim dunes (BW)

Discover the landscapes of the Upper Rhine on this scenic hike.

Overview



Length ca: 10,7 km



Altitude: 108 m



Duration ca: 2:40 hours



Oftersheim barbecue hut

Round Trip

Flora & Fauna

Accessible by Public Transport

Geological Highlights

Description of the Tour

The Oftersheimer Dünen trail takes you through the gently undulating landscapes of the Oftersheim & Sandhausen dunes, marking the northern extent of inland dunes in the Rhine-Neckar district.

Bridge to Maulbeerinsel

Rheintal Oftersheim Golf Course

Fairway Restaurant Oftersheim

Motocross Facility of the MSC



Start:

Grillhütte Oftersheim
68723 Oftersheim



ÖPNV:

Bus: Line 712 to Oftersheim,
am Alten Schießstand

SCAN
ME!



Other Points of Interest

Hardtwald Forest
Oftersheimer Dünen
Rokoko Theater



Ilvesheim - Maulbeerinsel

Experience a delightful riverside hike through the serene landscapes of Ilvesheim and the historic Maulbeerinsel (Mulberry Island).

Overview



Length ca: 3,13 mi



Altitude: 38 m



Duration ca: 0:56 hours



Ilvesheim

Round Trip

Environment

Accessible by Bus and Tram

A tranquil walk suitable for all ages

Description of the Tour

This scenic walk from Ilvesheim leads you across the Maulbeerinsel, offering peaceful riverside paths along the Neckar. Highlights include the Maulbeerinsel hydroelectric power station & a Jewish cemetery.

Dune Circular Route Ofersheim

Wasserkraftwerk Maulbeerinsel

Jüdischer Friedhof Ilvesheim



Start:

Lauffener Straße Bridge
68549 Ilvesheim



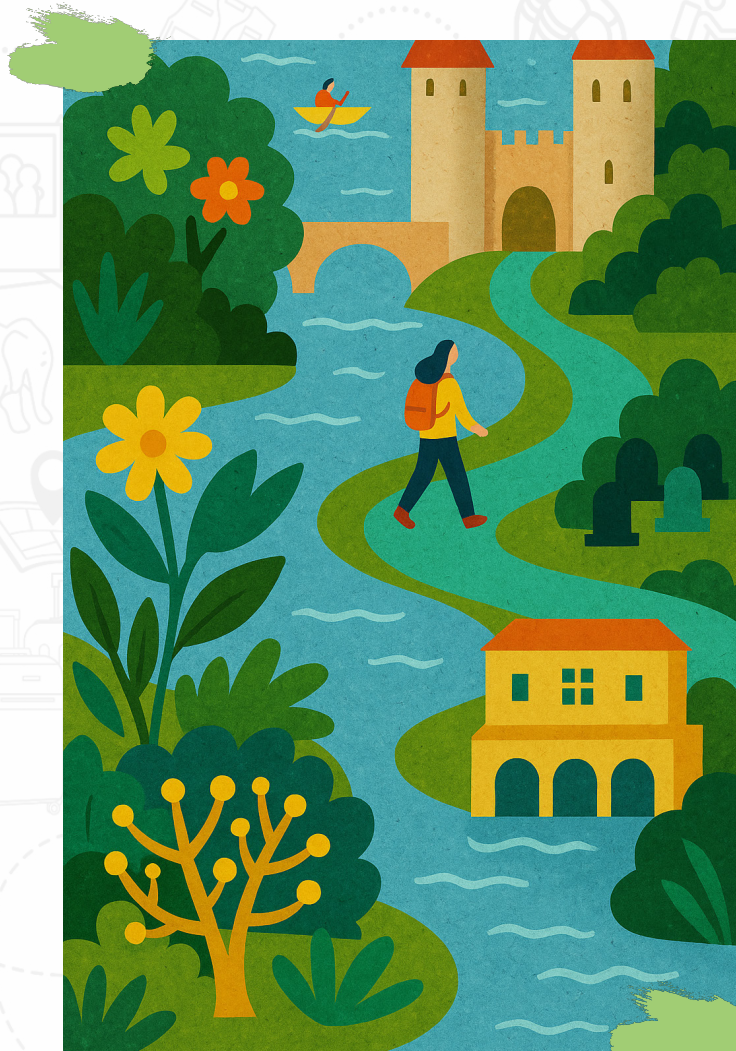
ÖPNV:

Bus: RNV line 42/46 Train:
S-Bahn-Mannheim HBF

Other Points of Interest

Maulbeerinsel (Mulberry Island)
Wasserkraftwerk Maulbeerinsel
Schloss Ilvesheim

SCAN
ME!



Old Rhine Adventure Trail

The Verbandsgemeinde Eich in Rheinhessen is a captivating destination that seamlessly blends natural beauty, historical significance, and cultural richness.

Overview



Length ca: Approx 6,1 km



Altitude: 83 m



Duration ca: 2:50 hours



AltrheinErlebnis path

Round Trip

Environment

Accessible by Bus and Tram

Educational & Wildlife

Description of the Tour

offering a mix of wetlands, forests, and historical landmarks. Visitors can explore wildlife habitats, spot birds, and learn about the region's rich history, including Roman and prehistoric finds.

Kulturhaus Eich

Historic Vaulted Cowshed

Pfarrwiesensee (Gimbsheim)



Start:

Osthofenerstr.41
67575 Eich



ÖPNV:

By Car: A63/A61 Highway
Train: From Mainz/Worms

Other Points of Interest

Historic Vaulted Cowshed
Eicher See
Eicher Heimatmuseum

SCAN
ME!



St. Leon-Rot: St. Leoner See Loop via Francis-Turbine

This medium-difficulty circular hike combines lakeside scenery with engineering marvels & historic mill sites around St. Leoner See.

Overview



Length ca: 7,9 km



Altitude: 10 m



Duration ca: 2:00 hours



St. Leon Neue Heimat

Public Transport Friendly

Engineering Highlights

Family Friendly

Description of the Tour

The route leads over easy forest paths and paved sections, visiting a historic mill site, a modern Francis-turbine power station, and multiple rest areas—all while offering tranquil lake panoramas.

Rastplatz (Rest Area)

Schlossmühle Reilingen & Burg Wersau

Francis-Turbine Power Plant



Start:

Bus Stop: St. Leon Neue Heimat



ÖPNV:

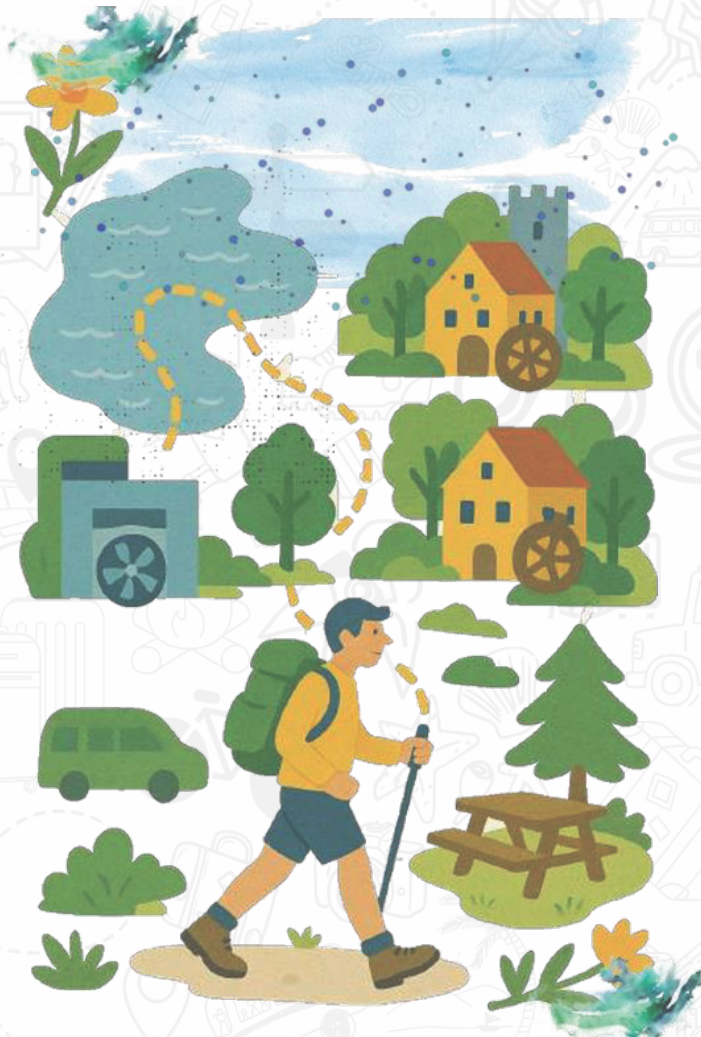
Train: S-Bahn S3/S4 Bus: to St. Leon Neue Heimat

SCAN
ME!



Other Points of Interest

St. Leon Rot Castle Park
Rot Museum
Nature Playground "Abenteuerpark"



Wagbachniederung Nature Discovery Trail

The trail goes through one of southern Germany's most diverse wetland habitats rich in birdlife & steeped in ecological transformation.

Overview



Length ca: 6,5 km



Altitude: 105 m



Duration ca: 1:34 hours



Bischof-von-Rammung
Straße 2

Accessible by Train and Bus

Round Trip

Flora & Fauna

Cultural / Historical

Description of the Tour

Enjoy a circular route through the scenic Wagbachniederung, a former industrial area now revitalized into a lush bird sanctuary. Walk past reed beds, shallow ponds, and marshes, while spotting rare birds like the little bittern, purple heron, and bearded reedling.

Café Windsor

Pilgrimage Church -Lady with the Kind Heart

Monastery/Marian Pilgrimage Church Waghäusel



Start:

Bischof-von-Rammung
Straße 2, 68753 Waghäusel



ÖPNV:

Train: S-Bahn S3/S9
Bus: Lines from Waghäusel

SCAN
ME!



Other Points of Interest

Erllichsee Recreation Lake
Saalbachniederung Nature Trail
Waghäusel Monastery & Park



The eco-trail in Guntersblum

Discover the unique flora, fauna, and geology of Guntersblum on this informative ecological nature trail. A perfect blend of education and outdoor relaxation, this path connects nature and wine culture in Rheinhessen.

Overview



Length ca: 3,0 km



Altitude: -m



Duration ca: 1:50 hours



Guntersblum Cemetery
Parking Lot

Accessible by Train and Bus

Wine Region

Info Boards

Family Friendly

Description of Walking Tour

The Ökolehrpfad leads through Guntersblum's vineyards and semi-dry grasslands, offering detailed insight into the local ecosystem, geological layers, and traditional winegrowing landscape. With 16 interactive educational stations.

Native animal & plant species

Wine-growing and soil knowledge

Geological and ecological displays



Start:

Guntersblum Cemetery
67583 Guntersblum



ÖPNV:

Train: Rb 44 Bus: From
Mainz, Worms

SCAN
ME!



Other Points of Interest

Historic Wine Cellars of Guntersblum
Rhine cycle path & picnic meadows



Democratia – Aqua – Technica VI

Environmental Communication for the Next Generation

Stay Connected with Us!

We'd love to keep in touch and share more with you. Join the community today — just scan and connect!



With Special Thanks to Our Sponsor

DAAD

Deutscher Akademischer Austauschdienst
German Academic Exchange Service